

SECTION 11

KEYSTONE MODULE

SUB-SECTIONS		
Section		Page
11.1	Technical Description	11-1
11.2	Servicing and Alignment	11-1
11.3	Component Layout and Schematics	11-1
11.4	Parts List	11-4
11.5	Specifications	11-5
ILLUSTRATIONS		
Figure		Page
11-1	Keystone Module Removal	11-1
11-2	Module Component Layout	11-2
11-3	Module Schematic	11-3

SECTION 11

KEYSTONE MODULE

11.1 TECHNICAL DESCRIPTION

11.1.1 General Description

Correction for keystone effects are provided by the Keystone module located in the front slide-out rack.

11.2 SERVICING AND ALIGNMENT

11.2.1 Disassembly and Access

Module Location:

- front slide-out rack

Tools & Equipment Required:

- 1/4" hex head socket driver

a) Remove the projector lower front and side panels as described in Section 5.

b) Remove the two screws securing the front slide-out rack to the projector chassis. Slide the rack out about 4".

c) Disconnect connector M15-P1 from the keystone module (item 1 below).

d) Remove the two screws at the bottom of the keystone board (item 2).

e) Lower the Keystone module from the slide-out rack.

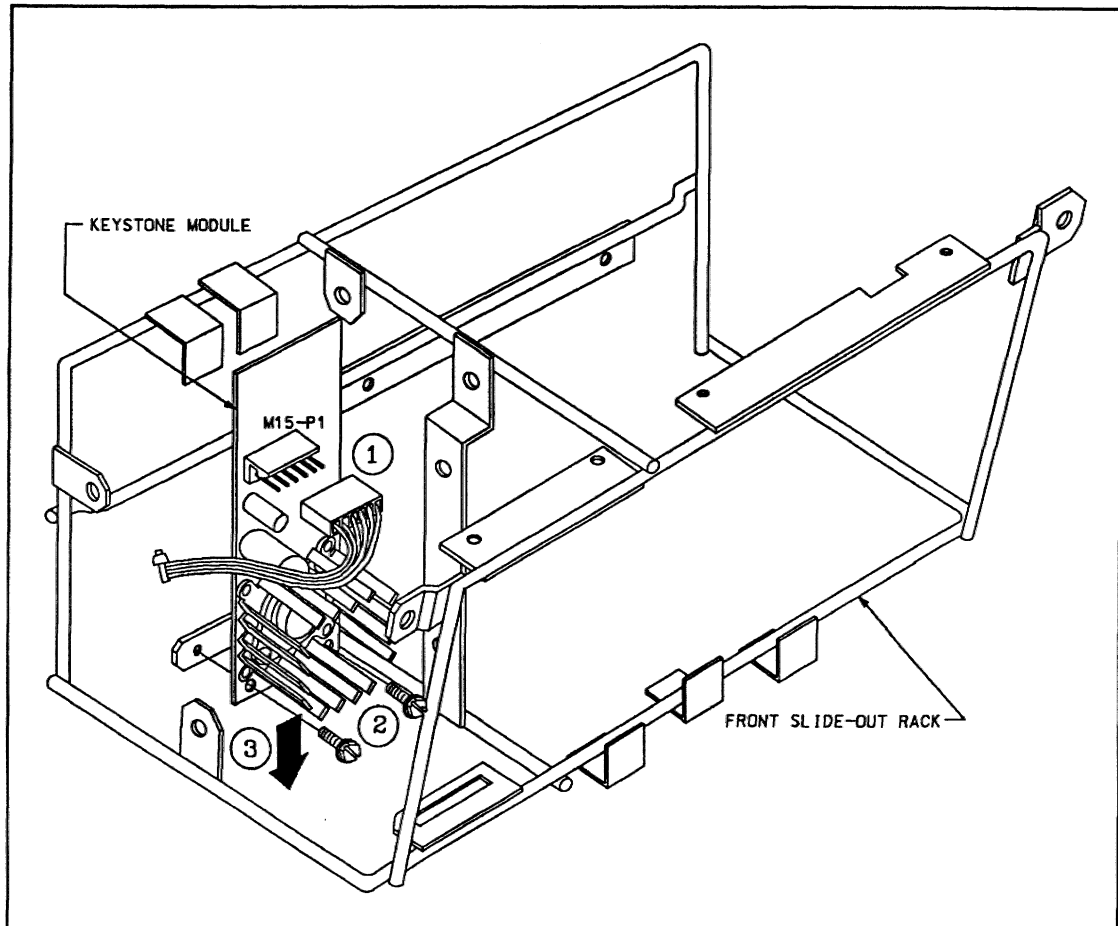


FIGURE 11-1. *Keystone Module Removal*

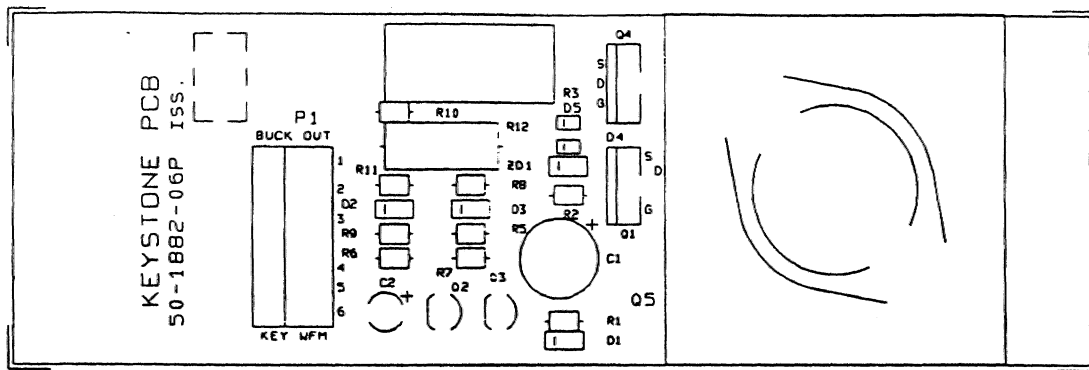
02060348

11.2.2 Alignment

There are no serviceable adjustments required for the Keystone module.

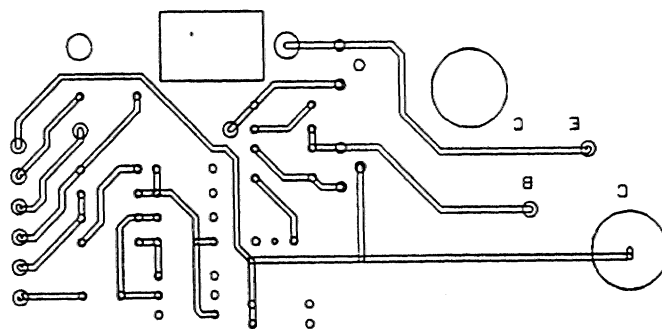
11.3 COMPONENT LAYOUT AND SCHEMATICS

Refer to the following pages for component layouts and schematics of the Keystone module.



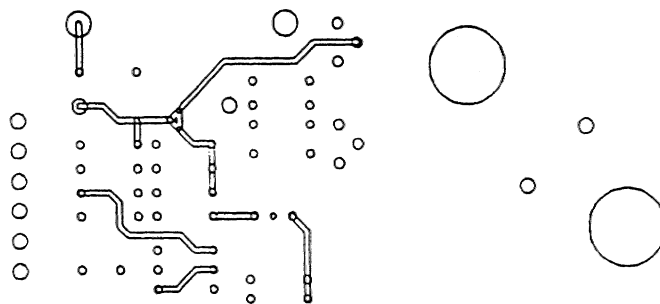
Component Layout

Silk Screen



Solder Side
(Viewed from Component Side)

Bottom Foil



Component Side

Top Foil

FIGURE 11-2. *Keystone Module Component Layout*

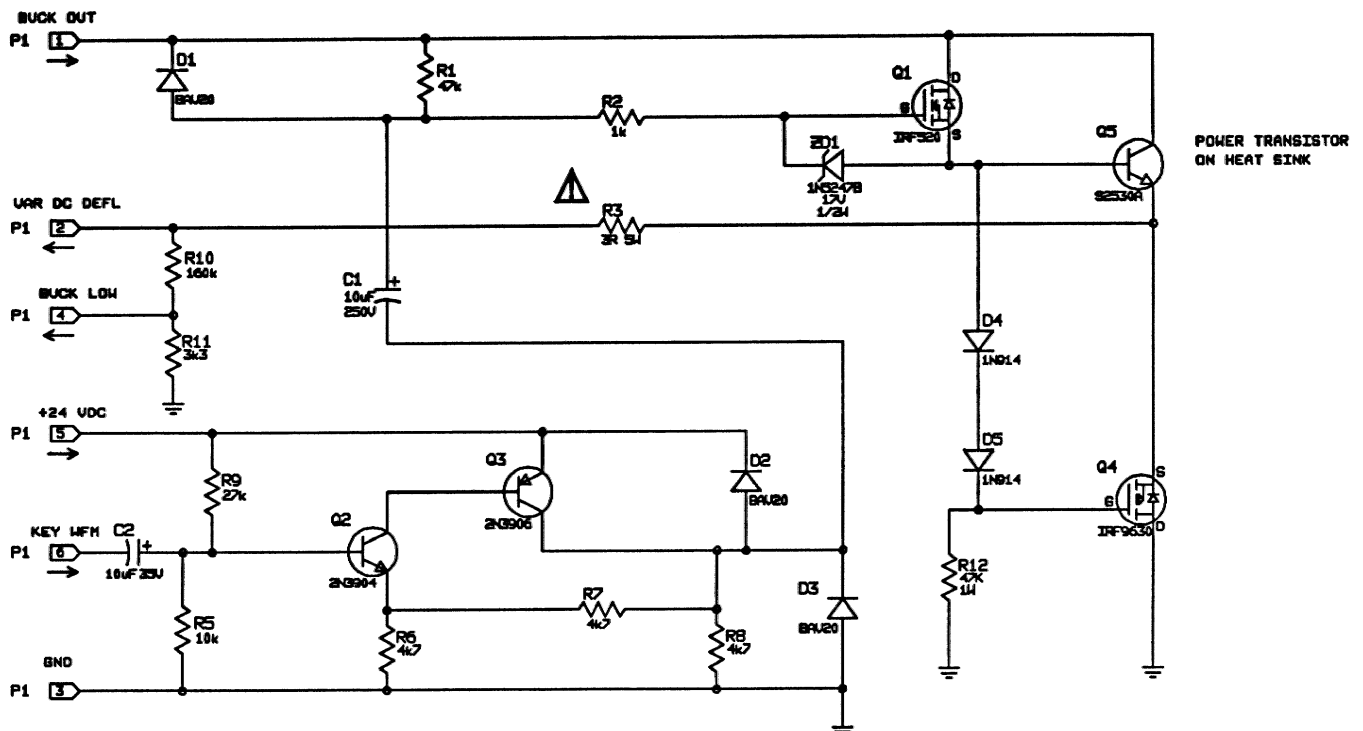


FIGURE 11-3. *Keystone Module Schematic*
00-270013-01P

11.4 PARTS LIST

▲ - CRITICAL SAFETY COMPONENT
(REPLACE WITH IDENTICAL PART)

Item Ref.	Part No.	Description
Transistors and Diodes		
Q1	TR-14-A00701-01P	1RF520, hex FET, 100V
Q2	TR-14-000881-06P	2N3904, NPN, 40V, 0.2A, 0.35W
Q3	TR-14-000873-82P	2N3906, PNP, small signal
Q4	TR-14-A00706-01P	1RF9630, hex FET, 200V
Q5	TR-14-000674-10P	S2530A, npn, 400V, 100W
D1-D3	D-14-000513-10P	BAV20, diode, 0.25mA, 150V
D4,D5	D-14-000513-01P	1N914, diode, 0.075A, 75V
ZD1	DZ-14-000531-37P	1N5247, zener diode, 17V, 5W, 5%
Capacitors		
C1	C-44-410010-08P	10 OF, 250V, electrolytic
C2	C-84-410005-01P	10 OF, 35V, electrolytic
Resistors		
R1	R-80-147025-11P	47K, 1/2W, 5%, metal film
R10	R-80-116035-11P	160K, 1/2W, 5%, metal film
R11	R-80-133015-11P	3.3K, 1/2W, 5%, metal film
R12	R-40-424735-01P	47K, 1/2W, 5%, metal film
R2	R-80-110015-11P	1K, 1/2W, 5%, metal film
R3	R-42-113075-02P	3R, 5W, 5%, NI
R5	R-80-110025-11P	10K, 1/2W, 5%, metal film
R6-R8	R-80-147015-11P	4.7K, 1/2W, 5%, metal film
R9	R-80-127025-11P	27K, 1/2W, 5%, metal film

11.5 SPECIFICATIONS

Connector Signal Levels:

Pin 1 analog input **BUCK OUT**
output of H. Regulator 47 to 152VDC

Pin 2 analog output **VAR DC DEFL**
BUCK OUT DC voltage drop 13VDC

Pin 3 ground **GND**

Pin 4 analog output **BUCK LOW**
= 0.01(VAR DC DEFL) $\pm 5\%$

Pin 5 **+24VDC**
voltage range 23 to 25VDC

Pin 6 analog input **KEY WFM**
keystone waveform
(from Waveform module) 8V p-p